

# WALK LIKE AN EGYPTIAN

## History

- The River Nile was important to the Egyptians because it provided them with fertile land to farm and also a means to travel and trade.
- Egyptians travelled in boats made from papyrus called skiffs. These developed into barges that were made from wood .
- There was a social hierarchy in Egypt which showed that the pharaoh was the most important person in society and Egypt was ruled by absolute monarchy.
- The Egyptians built the pyramids as a burial place for important rulers.
- The Egyptians believed in many gods that ruled and created certain things, such as Anubis who was the god of death and mummification.
- The Egyptians believed they would go to the afterlife after death and then be judged in the Hall of Truth. If the heart was balanced with Maat's feather, they would go to the Field of Reeds. If not, they would be eaten by Ammit.
- Tutankhamen wasn't an especially important king, but his tomb was the only royal burial found intact in modern times. The tomb was important because it let archaeologists record what an Egyptian king's tomb looked like and learn more about Ancient Egypt.
- Archaeologists are still uncovering artefacts from the Ancient Egyptian civilisation and what they tell us about their way of life.

## Design and Technology

- There are many foods that cannot be grown in the UK so have to be imported . Food can be transported by plane and boat into the UK. There are many rules about what can and cannot be imported.
- Egypt supplies the UK with fruits such as oranges and vegetables, e.g. red onions.
- The strongest shape in a structure is a triangle and is used in many buildings and structures. In Ancient Egypt the triangle played a major part of Egyptian life.
- The Egyptians used a contraction called a Shaduf to take water from the Nile and put it on their crops.
- There are many ways to join materials to make sure they are strong and sturdy. Some of the main joins are: flange, L-brace and slot.

## Geography

- The equator is an imaginary line that marks the center of the earth.
- The tropics of Capricorn and Cancer are measured at certain latitudes on the map and experience a warm climate all year round.
- The sun is at its highest point on 21st March (Equator) 21st June (Cancer) and 21st December (Capricorn) because this is the point when that tropic is tilted closer to the sun. This is called the summer solstice
- The Meridian Line in Greenwich represents the Prime Meridian of the world, Longitude Zero (0° 0' 0").
- Egypt is located on the continent of Africa specifically in North Africa.
- Along the Nile, the population density is one of the highest in the world.
- The process of the water cycle is when water is collected and evaporates (heat from the sun), condenses into clouds, falls as precipitation and the cycle is repeated.

## Music

- The main instruments used in ancient Egyptian times were the reed flute, harp and lyre. The reason we know this is because they are pictured in hieroglyphs and were found in tombs of the kings.
- The Kodaly hand signs can be used to show different notes.



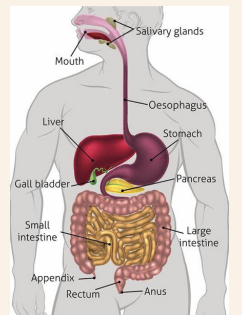
- Music notes are written on a staff and each note shape means a different sound and how long the note is played for.

## RE

- The sacred Islamic text is called the Qur'an. The original Qur'an is written in Arabic and is read from right to left.
- The Hajj is a pilgrimage taken by Muslims and is part of the 5 pillars of Islam.
- Many religions use stories to teach lessons and guide people through life .
- Different faiths believe that the world was created in different ways.
- There are many different beliefs about what happens after we die.

## Science

- The basic parts of the digestive system are mouth, salivary glands, liver, oesophagus, pancreas, gall bladder, stomach, small and large intestine, rectum and anus .
- You have two sets of teeth in your lifetime. As a child you have 20 milk teeth which fall out and are replaced by adult teeth.
- There are three main types of teeth: Incisors that help you bite off and chew pieces of food, canines that are used for tearing and ripping food and molars, that help you to crush and grind food.
- It is important to look after our teeth and there are many foods and drinks that can damage them. Drinking carbonated drinks and sugary drinks can damage the enamel on your teeth which is the layer of protection.
- We can protect our teeth by brushing them regularly and eating and drinking foods that contain high levels of sugar and acid in moderation.



## Art

- Relief printing is when you carve into a printing block that you then use to press onto paper and make a print. The lines or shapes you carve into the printing block will not have ink on them, so will not show up on your paper.
- Collagraph printing is a method of printing where a collage of materials of various textures are glued on to a printing plate and printed to create an image.
- Clay can be used to create 3D forms from basic shapes. Just like 3D shapes, clay can be cut into different shapes and connected together to make a 3D form.
- Slabbing is a technique that involves rolling the clay out flat and cutting out the shapes that you require for your work.
- To join clay together you need to score the clay (create a rough surface) and then use slip, which is a watered down clay, to glue the clay into place.

## Computing

- Adverts are used to sell products. Catchy songs and slogans capture our attention.
- Films can be used to sell products.
- Videos can be edited by adding effects in video editor.
- It is important to be responsible on the internet